




ABOUT  
ATOPIC DERMATITIS  
AND **EBGLYSS**<sup>®</sup>  
(LEBRIKIZUMAB)

**IMPORTANT INFORMATION** about the condition,  
and its treatment with **EBGLYSS**<sup>®</sup> (lebrikizumab)

You have received this brochure because  
your physician has prescribed **EBGLYSS**<sup>®</sup>  
(lebrikizumab) for your atopic dermatitis.





**You have been prescribed the EBGLYSS® (lebrikizumab) prefilled pen**



**You have been prescribed the EBGLYSS® (lebrikizumab) prefilled syringe**

## Contents

<b>Atopic dermatitis and what causes it</b> .....	04
<b>Treatment of atopic dermatitis</b> .....	06
<b>Biologics for atopic dermatitis</b> .....	08
<b>The importance of adhering to therapy</b> .....	10
<b>IL-13 and atopic dermatitis</b> .....	12
<b>Lebrikizumab mechanism of action</b> .....	12
<b>Dosing and format</b> .....	14
<b>Getting started with EBGLYSS® (lebrikizumab)</b> .....	16
<b>How to use the EBGLYSS® (lebrikizumab) pen</b> .....	18
<b>How to use the EBGLYSS® (lebrikizumab) syringe</b> .....	20
<b>Safety</b> .....	22
<b>Information for everyday life with atopic dermatitis</b> ...	24
<b>FAQ</b> .....	26

# ATOPIC DERMATITIS AND WHAT CAUSES IT

## What is atopic dermatitis?

**Atopic dermatitis, also known as eczema, is the most common chronic inflammatory skin condition.**

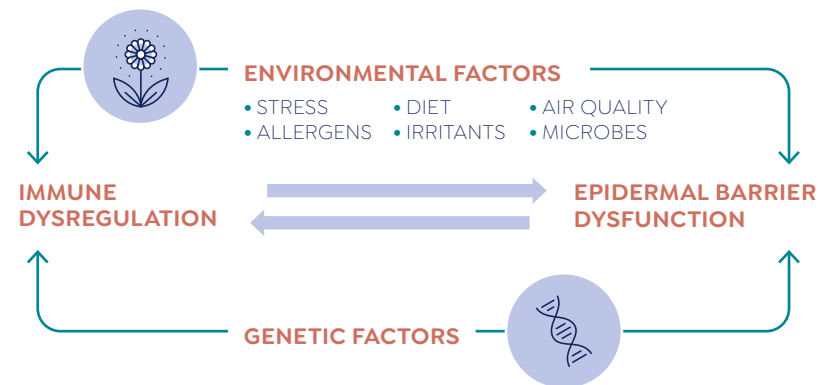
**It can cause itch, dry and scaly skin, discoloration, rashes, and blisters.** The dry skin that comes with the condition often itches: scratching it can cause a rash that itches even more, leading to more scratching.

**2-7%** In adults, the worldwide prevalence of AD ranges from 2-7%<sup>1,2,3,4</sup>

1. Harrop J, *et al.* Clin Exp Allergy. 2007;37(4):526-535.
2. Diepgen TL, *et al.* Br J Dermatol. 2016;174(2):319-329.
3. Saeki H, *et al.* J Dermatol. 2006;33(11):817-819.
4. Sacotte R, Silverberg JI. Clin Dermatol. 2018;36(5):595-605.

## What causes atopic dermatitis?

While the exact cause of atopic dermatitis is still unknown, some key factors may contribute to it.



One factor is the **immune system**, which may not function normally in people with atopic dermatitis. A protein called IL-13 can be overproduced and lead to inflammation.

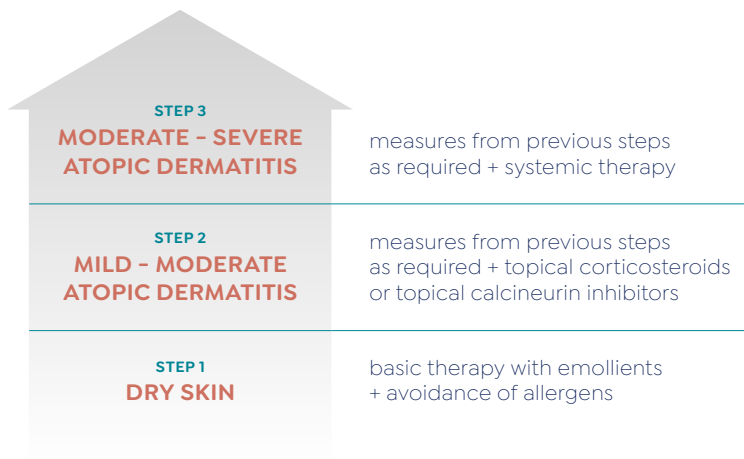
In addition, **genetic factors** may play a role. If you have parents with the condition, you have a greater chance of developing it yourself.

Lastly, some **environmental triggers** may be associated with atopic dermatitis. These include pollution, allergens, and certain chemicals, which can all lead to an inflammatory reaction by the body.

# TREATMENT OF ATOPIC DERMATITIS

How is atopic dermatitis treated?

**Treatment of atopic dermatitis depends on the severity of the condition.** For all people with the condition, emollients are the foundation of treatment, in addition to avoidance of triggers and allergens. Topical steroid creams can also be considered.



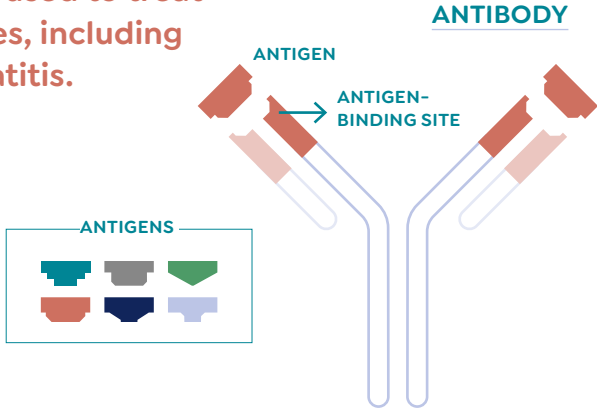
Your doctor will help to decide which is best for your particular condition.

# BIOLOGICS FOR ATOPIC DERMATITIS

## What are biologics?

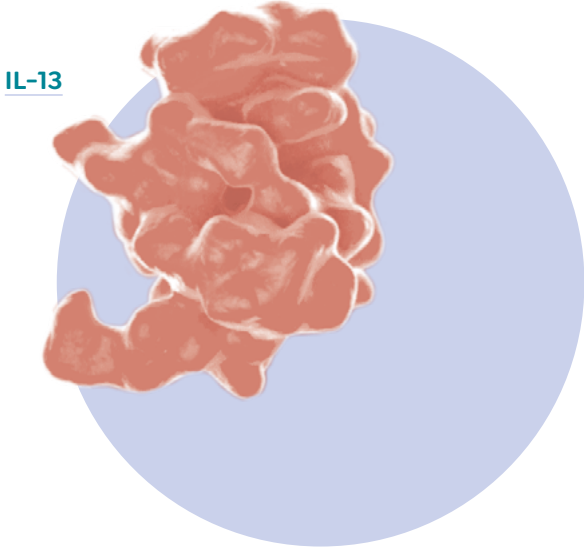
Biologics are proteins that can specifically target a certain antigen (something that the antibody specifically binds to) which plays a role in atopic dermatitis.

**Today, specifically-designed biologics are used to treat many diseases, including atopic dermatitis.**



**To develop a biologic, researchers first have to identify the right antigen to target.**

In atopic dermatitis, one such antigen is IL-13, which plays a key role in the condition.



**IL-13**

## THE IMPORTANCE OF ADHERING TO THERAPY

Adhering to therapy is fundamental

Atopic dermatitis, like other chronic diseases, will likely require treatment over an extended period of time.

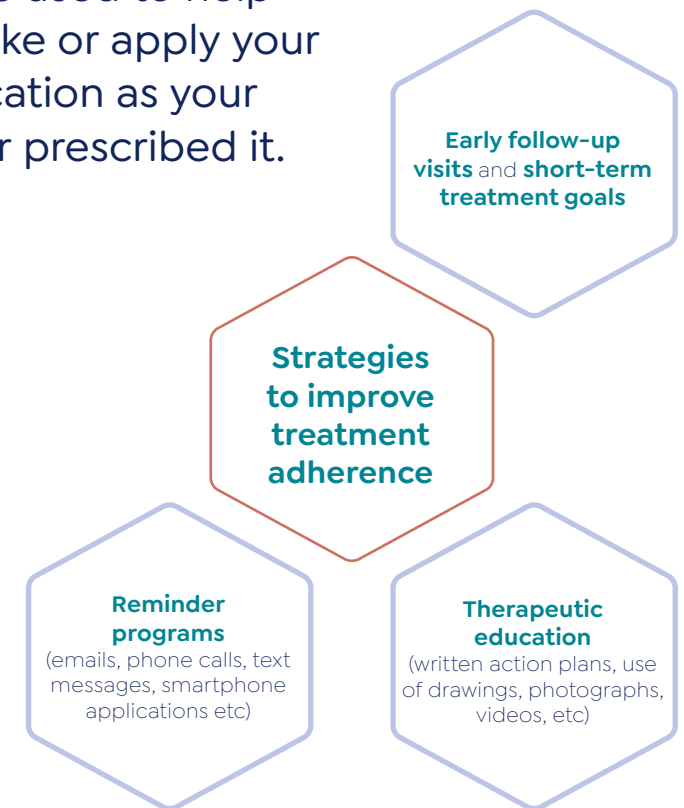


**Establish the goals of treatment with your doctor and maintain a close follow-up schedule. Make sure you ask your doctor or nurse about any doubts you have.**

Lastly, a number of reminders can be used to prompt you when one is forgetful.



A number of strategies can be used to help you take or apply your medication as your doctor prescribed it.

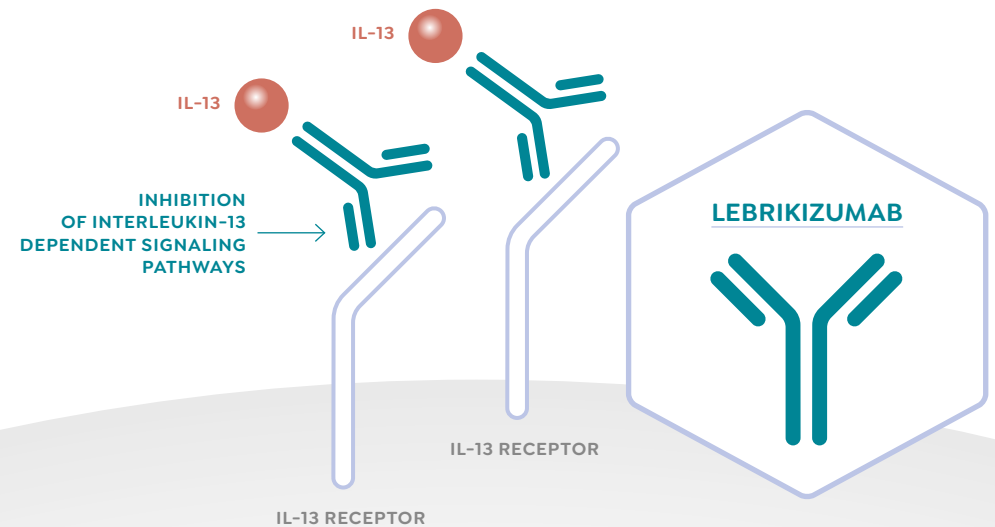


## IL-13 AND ATOPIC DERMATITIS

In people with atopic dermatitis, the protein called interleukin-13 (IL-13) behaves differently and can lead to skin inflammation, itch, rash, and other skin problems.

## LEBRIKIZUMAB MECHANISM OF ACTION

**Lebrikizumab is a biologic that is specially designed to target the protein IL-13.**



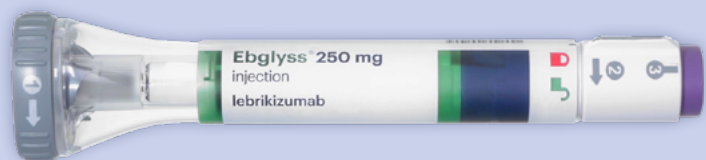
By inhibiting IL-13, **lebrikizumab** can have a beneficial impact on chronic itch.<sup>1</sup>

**Lebrikizumab has been approved to treat moderate-to-severe atopic dermatitis in adults and adolescents 12 years of age and older who are candidates for systemic therapy.**

1. Miron Y, Miller PE, Hughes C, *et al.* J Allergy Clin Immunol. 2022; S0091-6749(22)00233-0

## DOSING AND FORMAT

**EBGLYSS® (lebrikizumab) is available in two formats, a prefilled pen and prefilled syringe. Your physician will decide which is more convenient for you.**



### The single-dose prefilled pen offers:

- At-home administration
- Hidden and automated needle
- 15 second injection time
- Confirmation that you administered completely
- You'll hear 2 clicks, one when you start the injection, and one at the end to tell you that the injection is complete



### The single-dose prefilled syringe offers:

- Ability to control speed of injection
- At-home administration

## Storing EBGLYSS® (lebrikizumab)



After removing **EBGLYSS® (lebrikizumab)** from the refrigerator, it should be allowed to **reach room temperature** inside the carton by waiting for **45 min** before injecting.



**EBGLYSS® (lebrikizumab)** should be stored in the **refrigerator**, but it can be stored in the original package at **room temperature for up to 7 days or discarded**. Once stored out of refrigeration, do not place back in the refrigerator.

## Disposing of EBGLYSS® (lebrikizumab)



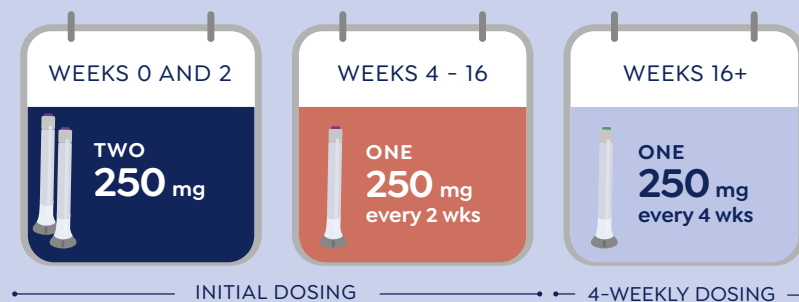
Put your used pen or syringe in a **robust, tight-closing, puncture- and leak-proof container immediately after use**.

# GETTING STARTED WITH **EBGLYSS**<sup>®</sup> (LEBRIKIZUMAB)



If you have received another biologic treatment for atopic dermatitis before **EBGLYSS**<sup>®</sup> (lebrikizumab), please provide your physician with all details about all previous biologics received to smoothly switch to **EBGLYSS**<sup>®</sup> (lebrikizumab).

Adult patients and adolescent patients (12 to 17 years of age and weighing at least 40 kg)



After 16 weeks of taking **EBGLYSS**<sup>®</sup> (lebrikizumab) every 2 weeks, you and your doctor have the option to switch to more convenient dosing every 4 weeks.\*

\* The recommended dosage of **EBGLYSS**<sup>®</sup> (lebrikizumab) is: an initial dose of 500 mg (two 250-mg injections) at week 0 and week 2, followed by 250 mg every 2 weeks until week 16 or until adequate clinical response is achieved, and maintenance dose is 250 mg every 4 weeks.

# HOW TO USE THE **EBGLYSS**<sup>®</sup> (LEBRIKIZUMAB) PEN

Place the **EBGLYSS**<sup>®</sup> (lebrikizumab) pre-filled pen, kept inside the carton, on a flat surface and let it warm to room temperature naturally for at least 45 minutes before use. Then remove it from the carton.

## 1 Choose your injection site

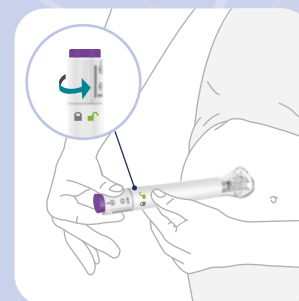
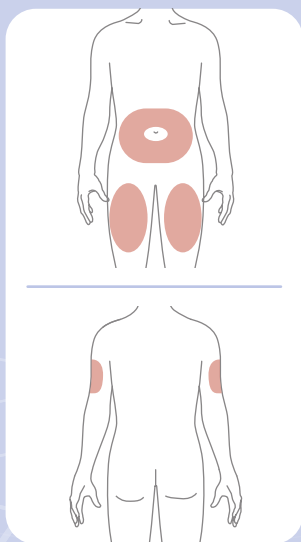
You or another person may inject into these areas.

- **Stomach area (abdomen)** - At least 5 cm away from the belly button (navel).
- **Front of thigh** - At least 5 cm above the knee and 5 cm below the groin.
- **Back of upper arm** - Another person should inject into the back of your upper arm.

Do not inject in the exact same spot every time.

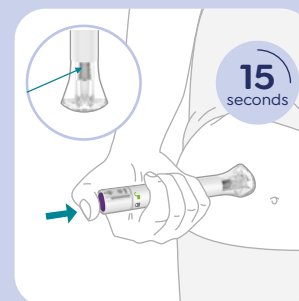
## 2 Uncap the Pen

- Make sure the Pen is locked.
- When you are ready to inject, twist off the grey base cap and throw the cap away in your household waste.
- Do not put the grey base cap back on—this could damage the needle.
- Do not touch the needle inside the clear base.



## 3 Place and Unlock

- Place and hold the clear base flat and firmly against the skin.
- Keep the clear base on the skin, then turn the lock ring to the unlock position.



## 4 Press and Hold for 15 seconds

- Press and hold the purple injection button and listen for two loud clicks:
  - First click = injection started
  - Second click = injection completed
- The injection may take up to 15 seconds. You will know the injection is complete when the grey plunger is visible.



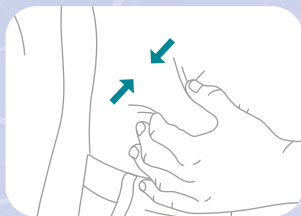
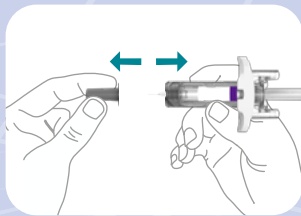
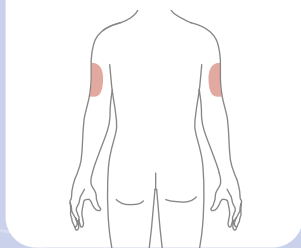
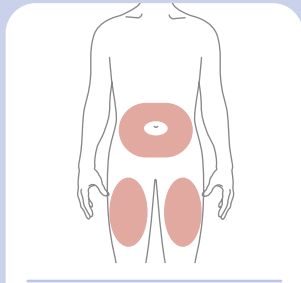
## 5 Dispose of the pen safely

Put your used pen in a robust, tight-closing, puncture- and leak-proof container immediately after use.

QR  
code

Instructions for using the **EBGLYSS**<sup>®</sup> (lebrikizumab) pen, including a step-by-step video instruction guide, can be found at [website address].

# HOW TO USE THE **EBGLYSS**<sup>®</sup> (LEBRIKIZUMAB) SYRINGE



Place the **EBGLYSS**<sup>®</sup> (lebrikizumab) pre-filled syringe, kept inside the carton, on a flat surface and let it warm to room temperature naturally for at least 45 minutes before use. Then remove it from the carton.

## 1 Choose your injection site

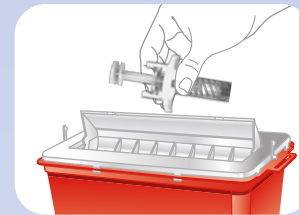
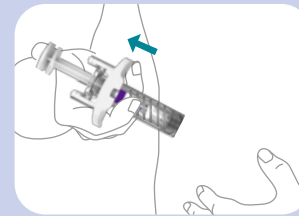
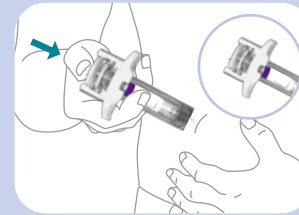
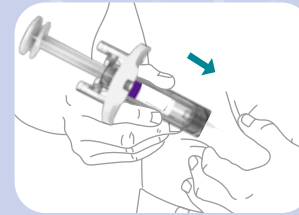
You or another person may inject into these areas.

- **Stomach area (abdomen)** – At least 5 cm away from the belly button (navel).
- **Front of thigh** – At least 5 cm above the knee and 5 cm below the groin.
- **Back of upper arm** – Another person should inject into the back of your upper arm.

Choose a different injection site each time you inject **EBGLYSS**<sup>®</sup> (lebrikizumab).

## 2 How to inject **EBGLYSS**<sup>®</sup> (lebrikizumab)

- Hold the **EBGLYSS**<sup>®</sup> (lebrikizumab) pre-filled syringe in the middle of the syringe body with the needle pointing away from you, and pull off the needle cap.
- **Pinch the Injection Site.** Gently pinch a fold of skin at the injection site (thigh or stomach, except for 5 cm around your belly button, or outer area of the upper arm if injected by your caregiver).



- **Insert the Needle.** Insert the Needle completely into the fold of skin at about a 45° angle.
- **Push in the Plunger Rod.** Gently relax the pinch while keeping the needle in place. Slowly and steadily push the Plunger Rod down all the way until it stops and the syringe is empty. Note: It is normal to feel some resistance.
- **Release and Remove.** Lift your thumb to release the Plunger Rod until the Needle is covered by the Needle Safety Device, and then remove the Syringe from the injection site. Lightly press a cotton ball or gauze on the injection site if you see any blood. Do not put the Needle Cap back on. Do not rub your skin after injection.
- **Dispose of the syringe safely.** Put your used syringe and needle cap in a robust, tight-closing, puncture- and leak-proof container immediately after use.

## SAFETY

---

**The safety of EBGLYSS® (lebrikizumab) has been well studied.**

In clinical studies, side effects were experienced by some people.

**Most of the side effects were mild-moderate in severity, and did not lead to discontinuation of treatment.**



**Please carefully read the patient leaflet which informs you about all possible side effects in detail.**



**Inform your doctor promptly about any side effects that you may experience.**

The most common side effects of **EBGLYSS®** (lebrikizumab) include:

- Eye and eyelid inflammation, including redness, swelling, and itching
- Injection site reactions
- Shingles (herpes zoster)
- High count of certain white blood cells (eosinophilia)

# INFORMATION FOR EVERYDAY LIFE WITH ATOPIC DERMATITIS

**While it might seem that nothing will relieve the discomfort, you can ease symptoms of atopic dermatitis with some changes to your lifestyle.**

Here are some easy-to-make changes that dermatologists recommend.



**Moisturize after bathing and when your skin feels dry.** Keeping your skin hydrated helps form a barrier between you and the world. Use a fragrance-free cream or ointment instead of lotion.



**Choose fragrance-free skin care products.** Fragrance can cause an AD flare-up. Use only products labelled “fragrance free” or “unscented” on a product label.



**Take short baths or showers to hydrate your skin.** Limit your bath to 5-10 minutes and use warm water. Apply your moisturizer while your skin is still damp after bathing.



**Wear loose-fitting 100% cotton clothing.** Cotton is less irritating and lets your skin breathe. To avoid flare-ups, avoid wearing tight clothing, and never wear wool next to your skin.



**Wash clothing in detergent that is fragrance free and dye free.** The fragrance and dye can trigger a flare-up.



**Wash new clothing before you wear it.** Be sure to use a fragrance-free, dye-free detergent.



**Protect your skin from extreme temperatures.** Cold temperatures can dry your skin, which can cause a flare. When you get overheated and sweat, the sweat can also trigger a flare-up.

## What if I forget/miss an injection?

If a dose is missed, the dose should be administered as soon as possible. Thereafter, dosing should be resumed at the regular scheduled time.

## Can **EBGLYSS**<sup>®</sup> (lebrikizumab) influence my ability to drive?

**EBGLYSS**<sup>®</sup> (lebrikizumab) is unlikely to influence your ability to drive and use machines.

## How long should I continue the medication?

You should continue the medication as long as your doctor tells you to. Do not discontinue the medication by yourself.

## Can I stop medication or change administration?

You will need to discuss any changes in dosing with your doctor.

## Are there any foods I should avoid while taking?

**EBGLYSS**<sup>®</sup> (lebrikizumab) is not known to interact with any foods. You do not need to make any dietary changes while taking **EBGLYSS**<sup>®</sup> (lebrikizumab).

## Can I consume alcoholic beverages while taking **lebrikizumab**?

Alcoholic beverages can be consumed while taking **EBGLYSS**<sup>®</sup> (lebrikizumab). However, considering your overall health is always a good idea to moderate consumption of alcohol.

## Are there any medications that I can/cannot take while on **lebrikizumab**?

Since **EBGLYSS**<sup>®</sup> (lebrikizumab) is a biologic, no interactions with other drugs is known to date. Please ask your doctor if you have any concerns.

## What if I become pregnant?

There is little data on the use of **EBGLYSS**<sup>®</sup> (lebrikizumab) during pregnancy. Ask your doctor for specific advice, but it is likely that **EBGLYSS**<sup>®</sup> (lebrikizumab) should be avoided during pregnancy given the lack of relevant clinical data.

## Can I get a vaccination while taking **lebrikizumab**?

Your doctor will advise you about getting any vaccinations before or while taking **EBGLYSS**<sup>®</sup> (lebrikizumab). However, prior to initiating therapy with **EBGLYSS**<sup>®</sup> (lebrikizumab), it is likely your doctor may want you to complete all age-appropriate immunizations according to local guidance. Live and live attenuated vaccines should not be given concurrently with **EBGLYSS**<sup>®</sup> (lebrikizumab).



**Consult the package leaflet for more information.**

